

# THE MINOTAUR

THE ATHENIAN BEREAN COMMUNITY PLAYERS NEWSLETTER

VOLUME XX ISSUE II MAY 2012



EDITED BY ANDREA THOMPSON  
PLEASE SEND SUBMISSIONS AND INQUIRIES TO  
[andreanicole79@gmail.com](mailto:andreanicole79@gmail.com)



## 2011-2012 OFFICERS

**PRESIDENT**  
Marlo Tinkham

**VICE PRESIDENT**  
Carol Ault

**SECRETARY**  
Linda Watkins

**TREASURER**  
Jim Parsons



## The Taming of the Shrew

William Shakespeare's  
classic battle of the sexes

**May 10-13, 2012**

**Directed by Celeste Parsons**  
Featuring the music of  
Timothy S. Klugh

Sponsored by



Mark your calendar for the May Meeting!

**MAY 9, 2012 AT 5:30PM**

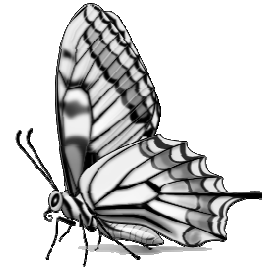
at Stuart's Opera House

This is the annual election of officers meeting





## LIGHTS AND RIGGING SESSION CLOSES THE 2011-2012 WORKSHOP SEASON



Nearly a dozen ABC Players spent four hours on March 31 learning the difference between battens and borders, climbing up to the lock rail and loading floors, loading weights onto a counterweight arbor, and generally gaining a new perspective on the complexity, capabilities, and safety issues offstage rigging and lighting from Stuart's Opera House Technical Director T-Bone McCauley.

T-Bone provided an extensive vocabulary list, illustrating each term by pointing out the object named and often telling stories from his own experience about proper and improper use. Attendees learned not only how to safely use the equipment, but which items backstage to leave strictly alone, and why (just ask one of us why we should NOT touch the red metal box between the stage left door and the pull ropes for the main red curtain). T-Bone also pointed out the markings and color codings that indicate newly-instituted standards—for example, that a red weight on a rigging arbor is the base weight that should never be removed so that a batten remains in balance even when no lighting instruments or curtains are hung on it.

The enthusiastic students included Carol Ault, Kaylla Steadman, Celeste and Jim Parsons, Jodi and Kyli McNeal, Rachelle Gorland, Chris Neumann, and Lynnette and Micaiah Clouse.

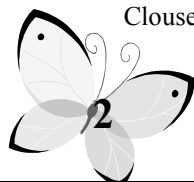
If you have suggestions for 2012/2013 workshop topics, send them to Celeste Parsons at [aheadwinds2@gmail.com](mailto:aheadwinds2@gmail.com). Possibilities currently under consideration include a rescheduled "Getting Your Act Together" (canceled this winter due to ice), and basic dance styles and movement.



T-Bone points out Elements of the fly rigging at Stuarts Opera House



Jim Parsons, T-Bone McCauley, Chris Neuman, Claire Reich, Jeff Swart, Celeste Parsons, Rachelle Gorland, Kyli MacNeal, Micaiah Clouse, Jodi MacNeal and Lynette Clouse pose after the workshop.



## SHOWS FOR THE 2012-2013 SEASON HAVE BEEN SELECTED !!!

Fall: November 1-4, *Nightfall with Edgar Allen Poe* by Eric Coble  
Directed by Miranda Miller

Christmas: November 30-December 2, *Hansel and Gretel*  
Directed by Celeste Parson with Musical direction by David Tadlock

Winter: March 8-9 and 15-17, *Is There Life After High School?*  
Book by Jeffrey Kindley with music and lyrics by Craig Carnelia  
Directed by Chris Coleman with musical direction by Lynn Sullivan

Spring: May 9-12, *First Things First* by Derek Benfield  
Directed by Joe Balding



### CONGRATULATIONS

SAM WITMER AND KAYLLA STEADMAN

2011-2012 winners of the Steve Haskins Scholarships

Awards will be presented during the opening night of  
The Taming of the Shrew

### You know you've worked in community theater if...

- ...your living room sofa spends more time on stage than you do
- ...you've ever appeared on stage wearing your own clothes
- ...you've ever appeared on stage in an outfit held together by hot glue
- ...you've ever had to haul a sofa offstage wearing an evening gown and heels
- ...you've ever played the father of someone your father's age
- ...you've appeared in a show where the cast outnumbered the audience 2 to 1
- ... you full understand that the name Stephen Sondheim is synonymous with three months of rehearsals

